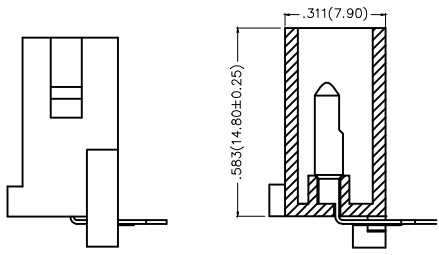
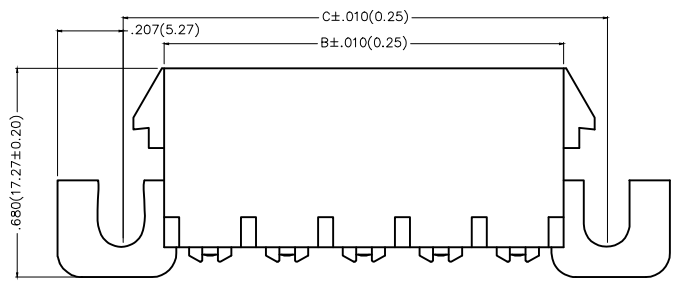
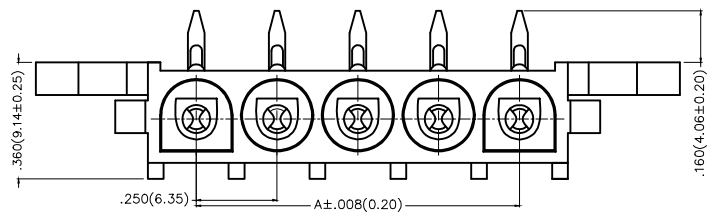


| REV | LOCATIONS | DESCRIPTION | DATE | REVISER | APPD |
|-----|-----------|-------------|------|---------|------|
| | | | | | |

Electrical
 Current Rating: 13.5A AC(rms)/DC
 Voltage Rating: 600V AC(rms)/DC
 Contact Resistance: 3.5 m Ω Max
 Insulation Resistance: 1000 M Ω MIN
 Withstanding Voltage: 5000V AC r.m.s
 Temperature Range-Operating: -40°C ~+105°C
 Material and Plating
 Housing: PA66(UL 94V-0)
 Contact Pin: Brass
 Plating: Tin Plated

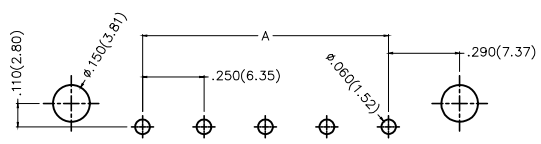


| Circuits (n) | Part No. | Dimensions(in./mm) | | |
|--------------|--------------------|--------------------|--------------|--------------|
| | | A | B | C |
| 2 | FWF63509-S02B22W1K | .250(6.35) | .550(13.97) | .830(21.08) |
| 3 | FWF63509-S03B22W1K | .500(12.70) | .800(20.32) | 1.080(27.43) |
| 4 | FWF63509-S04B22W1K | .750(19.05) | 1.050(26.67) | 1.330(33.78) |
| 5 | FWF63509-S05B22W1K | 1.000(25.40) | 1.300(33.02) | 1.580(40.13) |
| 6 | FWF63509-S06B22W1K | 1.250(31.75) | 1.550(39.37) | 1.830(46.48) |
| 7 | FWF63509-S07B22W1K | 1.500(38.10) | 1.800(45.72) | 2.080(52.83) |
| 8 | FWF63509-S08B22W1K | 1.750(44.45) | 2.050(52.07) | 2.330(59.18) |
| 9 | FWF63509-S09B22W1K | 1.972(50.08) | 2.300(58.42) | 2.580(65.53) |
| 10 | FWF63509-S10B22W1K | 2.250(57.15) | 2.550(64.77) | 2.830(71.88) |


Ordering Information

FWF 635 09 - S XX B 2 2 W1 K
 1 2 3 4 5 6 7 8 9 10

| | | | | | |
|-----------------------------|--------------------------------------|-----------------------------|--------------------------------|--------------------|--------------------------------|
| 1 Category FWF-Wafer | 2 Series Number 635-Pitch6.35mm | 3 Distinction No. 09 | 4 Row Option S-Single Row | 5 Circuits XX | 6 Entry Angle B-90° Angle |
| 7 Plating 2-Tin Plated | 8 Material-Resin 2-PA66 | 9 Color-Resin W1-White | 10 Packaging K-Tray | | |



Recommended P.C.Board Layout
 General tolerances: ±0.05mm

| | | | | | | | |
|------------------------|---------------------------------------|--|--|--|--------------------------------|--|---|
| THIRD ANGLE PROJECTION | GENERAL TOLERANCES (UNLESS SPECIFIED) | | APPROVE BY FRANK | DATE 28/JUN/13 | PART NO. FWF63509-SXXB22W1K | ITEM NO. FWF63509 |  Leader Of Industry |
| | DESIGN UNITS Inch (metric) | X.±.012(0.30) X.X±.008(0.20) X.XX±.006(0.15) X.XXX±.004(0.10) | X.±5' .X'±2' .XX'±1' .XXX'±0.5' | CHECKED BY CHERRY | DATE 28/JUN/13 | TITLE Wire to Board (Wafer) Pitch 6.35mm 90° Angle (DIP) | |
| SCALE 5:1 | SIZE A4 | DRAWN BY KEVIN | DATE 28/JUN/13 | THIS DRAWING CONTAINS INFORMATION THAT IS PROPRIETARY TO TXGA INDUSTRIAL ELECTRONICS(S.Z)CO.,LTD AND SHOULD NOT BE USED WITHOUT WRITTEN PERMISSION | | REV 0 | SHEET NO. 1/1 |